

FALL/WINTER 2015

Textile Tango

... globally inspired

"There are those who dance to the rhythm that is played to them, those who only dance to their own . . ."

Jose Bergamin - Spanish Poet

Monarch Bag - pg. 2

Fashion Bags.....	pg. 2
Slings.....	pg. 5
Small Slings.....	pg. 11
Large Slings.....	pg. 14
Accessories.....	pg. 21
Swatches.....	pg. 26

Fashion Bags

For the gals who prefer the over
shoulder function along with the flair
of unique textiles!

MONARCH BAG

Migrate with ease and beauty! Bountiful and generous interior with small
pocket. Small open exterior pocket for quick easy access.
11" drop from top of handle to top of bag. Great Bag!

Style #298

14" x 10"

Available as shown



P = pocket
for easy cell
phone access!



298-102



298-100



298-101



298-104



298-105



298-107



298-108



298-111

ANDIE

Style #295
12" x 9" x 3"
Available as shown

P

P = pocket
for easy cell
phone access!

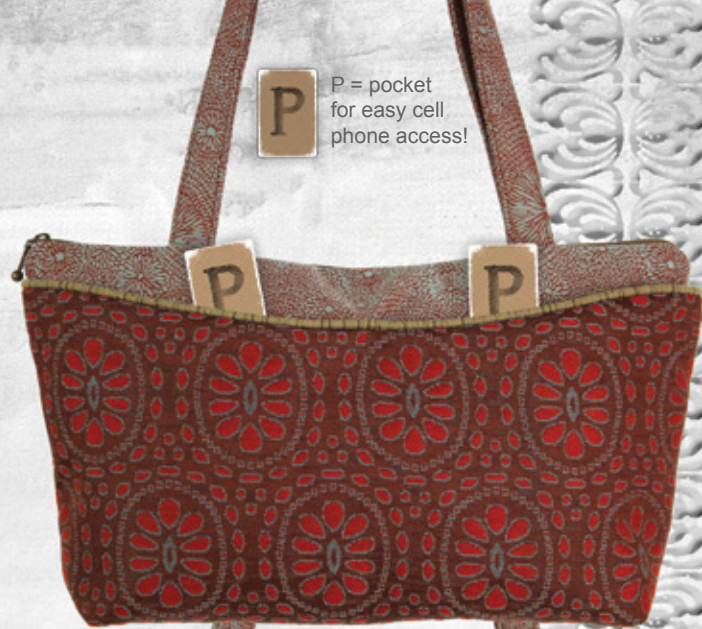
For the gal that likes the over the shoulder haul . . . without the "tote" look! Generous strap length will clear coat arms.

Generous interior with horizontal function, no digging.

One small open interior pocket. Two front separate open exterior pockets, one with small open interior pocket for keys or cell phone. Aaand on back full width of bag, zippered pocket!



295-101



295-104



295-102



295-105



295-107



295-106



295-111



295-112



295-108



MILLIE LU

Style #250

15.5" x 5.5" x 3"

Available as shown

Oh sweet Millie Lu! We still have such a fan base for her!

They love her long horizontal look and function! Interior open pocket for keys and lippy-goos. Open exterior pocket for easy access. Fits nicely under the arm. They buy her for dress up or daily bag!



P = pocket
for easy cell
phone access!



250-107



250-100



250-104



250-101



250-108



250-111

SLING 'EMS

....have earned their rites of passage thru journeys, testimonials and the longevity of each bag style we continue to offer. The changing of new exciting textiles each season keeps it fun for the collector!



Busy Body - pg. 9

POCKET BAG

Style #297

7" x 9.5"

Available as shown

Flat, sleek and compact . . . all with an adjustable 1" custom strap!
Interior also has an additional small pocket. Exterior . . . top open pocket for quick access aaaand a zipped pocket for secure needs.
WILL fit iPad mini and eReaders!

297-102

297-100

297-101

297-104

P = pocket
for easy cell
phone access!

297-105

297-106

297-107

297-108

297-109

297-110

297-111

297-112

CITY GIRL

Style #231

8" x 10" x 2.5"

Available as shown



P = pocket
for easy cell
phone access!

City Girl is for the "oblong shape customer"!
Generous interior, checkbooks fit nicely!
Small interior open pocket for lippy-goos.
Two exterior pockets..one zipped and
shallow. . . second open for quick and
easy access, keys and phone!



231-106



231-100



231-101



231-102



231-104



231-105



231-107



231-108



231-109



231-110



231-111



231-112



P = pocket
for easy cell
phone access!

SPARROW

Style #249

9.5" x 7.5"

Available as shown

Sparrow is popular for her preening . . . customers find her to be functional with flair! Generous interior with small open pocket for lippy-goos. Popular for her open double breasted exterior pockets!



249-104



249-100



249-101



249-102



249-105



249-106



249-107



249-108



249-109



249-110



249-111



249-112



BUSY BODY

Style #269

9" x 9.5" x 2"

Available as shown

The sling with a Boho vibe.
Adjustable web strap. Interior
with small pocket for lippy-goos.
Open exterior pocket
for quick access.



P = pocket
for easy cell
phone access!



269-108



269-100



269-101



269-102



269-104



269-105



269-106



269-107



269-109



269-110



269-111



269-112

SPREE

Style #291

11" x 11" x 2"

Available as shown

A top Favorite! Adjustable web strap! Generous interior, with small open pocket for lippy-goos. Top shallow open exterior pocket for quick easy access. Front zipped pocket. Generous open pocket on back.... will hold a water bottle...great bag!



291-107



P = pocket
for easy cell
phone access!



291-100



291-101



291-102



291-104



291-105



291-106



291-108



291-109



291-110



291-111



291-112

SMALL SLINGS

CALLA

Style #290

9.5" x 7" x 1.5"

Available as shown

290-104

Popular for her funky look!
Top zipper over main compartment.
Exterior open pocket for easy access.
Sweet for small needs or soirées!

290-102

290-107

290-109

290-110

290-111

290-112



P = pocket
for easy cell
phone access!

CUPCAKE

Style #266

6.5" x 7"

Available as shown

Sweet, sweet little bag!
Top zip, back zip pocket and
front open exterior pocket
for easy access.



P = pocket
for easy cell
phone access!

ZIPPED
BACK
POCKET

266-105

266-100

266-101

266-102

See order form
for a 10-pack
price break.

266-104

266-106

266-107

266-108

266-109

266-110

266-111

266-112

SPROUT

Style #275

5" x 6.5" x 1"

Available as shown

Sprout keeps popping up
as a top favorite!

Top zip, side zip pocket,
back zip pocket!

See order form
for a 10-pack
price break.

275-109

ZIPPED
BACK
POCKET

275-100

275-101

275-102

275-104

275-105

275-106

275-107

275-108

275-110

275-111

275-112

ON THE GO

Our larger bags are light in weight
and prepared for function!
Maintain your style
uniqueness through
the haul!

Worker Bee - pg. 18

ON THE GO

Our larger bags are light in weight
and prepared for function!
Maintain your style
uniqueness through
the haul!

Worker Bee - pg. 18

14

ON THE GO

Our larger bags are light in weight
and prepared for function!
Maintain your style
uniqueness through
the haul!

Worker Bee - pg. 18

Style #271

12" x 12"

Available as shown

CAFE SLING

Larger sling! Holds iPads and catalogs... generous main compartment with small interior pocket. Two separate open exterior pockets, one with small open interior pocket. Adjustable web strap to accommodate all!



P = pocket
for easy cell
phone access!



271-110



271-104



271-105



271-107



271-109



271-111



271-112

JOHNNY BAG

Style #270

10" x 11" x 2"

Available as shown



270-108

The fashionable version of a messenger bag!
Top zipped generous compartment with
small interior pocket. Two exterior open
pockets for easy access. Exterior flap for
stylish look and security.



270-102



270-104



270-105



270-107



270-109



270-110

RAIL BAG

Easy rolling here! We've noted the narrow shape "messenger Bag" is popular for crowded places! Holds iPad and catalogs and shoes . . . a plus. No zipper closure for main compartment . . . wait . . . there is a large zippered interior pocket, that has made everyone happy, whew. Under flap are two separate open exterior pockets, one with small open interior pocket. It gets better..back of bag has full zippered pocket . . . great for planner. Adjustable web strap to accommodate all.

Style #288

11" x 13" x 3.25"

Available as shown

288-100



METRO

Style #248

15" x 11" x 3"

Available as shown

Flap over non-zipped opening makes the Metro popular and secure with easy access. Because it's lightweight, once packed and stuffed makes for easy sailing. Organizer panel on the front under the flap is perfect for cell phones, lip balm, pen and business cards . . . large interior zip pocket to secure papers or chargers. Fits up to 16" laptop and your iPad with case fits beautifully. Soft adjustable custom strap.



WORKER BEE

Style #239

12.5" x 14" x 2.5"

Available as shown

Still remains popular for the more stylish haul. Holds iPad and catalogs. Small interior open pocket. One zipped exterior pocket. One open exterior pocket with small interior pocket . . . say that three times fast!

239-105

239-106

239-107

239-108

239-110



P = pocket
for easy cell
phone access!

TOTE

Style #292

16" x 12" x 3.25"

Available as shown

A Tote is a Tote is a Tote! However there is that customer who does not compromise her style . . . Maruca would love to accommodate her! Generous interior, with small open interior pocket. Two separate deep exterior pockets, one with small open pocket. Back of Tote has full width zippered pocket. And yes, the straps will clear coat arms!

292-104

292-107

292-108

292-111

292-101

Lined in wipeable liner

DITTY

Style #243

8.75" x 3" x 3.5"

Available as shown

243-104

NOT JUST FOR LOTIONS AND POTIONS!

Lined in wipeable liner

243-102

243-105

243-111

243-100

243-107

TRAVELER BAG

Style #296

12" x 6.5" x 4"

Available as shown

Lined in wipeable liner

We loooove this bag! It holds so much (O.K. maybe not a curling iron or blow dryer) but all your other beauty items for sure! Generous interior with wipeable liner and an additional zipped pocket. Exterior zipped pocket on front. Does not include personal stylist!

296-107

296-102

296-100

296-104

296-111

296-105

CHICAS

We love Chica! Your younger customers will migrate toward her. The perfect soirée bag for all.

Style #241
10.5" x 5.5"
Available as shown



241-105

241-102

241-101

241-100



241-107



241-110



241-109



241-111

ACCESSORIES

The sweet little gems of Maruca! So popular for personal and gifting!
(all accessories are lined in wipeable liner)

COINS

Style #101

5" x 3.75"

Available in all fabrics



101-107

Top favorite for the simplest of needs... keys attach!

See order form for a 10-pack price break.

101-100



101-101



101-102



101-104



101-105



101-106



101-108



101-109



101-110



101-111



101-112



ROO POUCH

Simple with oomph! Top zip for cards & cash. Diagonal side zip for coins. Keys attach!

Style #289

5" x 5"

Available as shown



289-106

See order form for a 10-pack price break.

289-100



289-101



289-102



289-104



289-105



289-107



289-109



289-110



289-111



289-112



289-108



HEIDI WALLET

Style #234

7" x 4"

Available as shown

Uses: Wallet, Eye glasses, Cosmetic and yes, people do still carry check books.



234-108



234-100

See order form
for a 10-pack
price break.

234-101

234-102



234-104

234-105

234-106

234-107



234-109

234-110

234-111

234-112



PENNY WALLET

Style #233

10" x 4"

Available in all fabrics

Fits checkbook and cell phones...
customers buy her as a clutch as well!

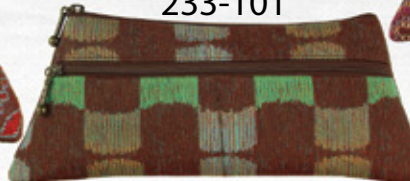


233-104

233-100

233-101

233-102



233-105

233-106

233-107

233-108



233-109

233-110

233-111

233-112



See order form
for a 10-pack
price break.

COSMETICS

Style #136

7.5" x 5" x 2"

Available as shown

Not just for cosmetics!
Cameras, jewelry and lady goods.



136-110



136-100



136-101



136-102

See order form
for a 10-pack
price break.



136-104



136-105



136-106



136-107



136-108



136-109



136-111



136-112

VALETS

Style #255

8.5" x 4"

Available as shown

Our little textile wonder!

Supply bag, glasses,
cosmetics, cameras.



255-101



255-100

See order form
for a 10-pack
price break.



255-102



255-104



255-105



255-106



255-107



255-108



255-109



255-110



255-111



255-112

BEETLES

Style #283

7" x 4.5"

Available as shown

Wallet on a wristlet helps ensure you won't leave it on a counter or in a shopping basket. Zipped pocket on top (fits checkbook, cell phone & camera), side zipped pocket on front and back! Aaaaand a removable wrist strap.



283-102

ZIPPED BACK
POCKET FOR
COINS



283-104

283-105

283-106

283-100

283-101



283-110

283-111

283-112

283-107

283-108

283-109

See order form
for a 10-pack
price break.

**A bountiful "Pastry Bar" table
of Maruca's accessories during
Holidays helps with multiple
sales!**



SWATCHES Fall/Winter 2015

Textile Tango ... GLOBALLY INSPIRED

Maruca's FALL/WINTER 2015 collection ... our rhythmic, harmonious and zesty combinations will raise your pulse. The heart of the textiles beats strongly with accents of artisans across; bark paintings, Ikats, ceremonial cross-stitch, European velvets, mosaic tiles to the contemporaries. We can unknowingly relish in our own culture of art, perhaps never realizing the design's origin. These global influences have a monumental impact on interiors and fashion that enrich our everyday lives. All our textiles are designed in house and woven in U.S. mills.

ALWAYS WEAR SOMETHING THAT SINGS.....

100 Quilt Gem



The tiny cross stitches give great detail and interest to the brilliant block patterns. Spiced Apricot, Chaised Blue, teal and Wild Mulberry quilt shapes over a rich autumn raisin ground. Thank you Hmong artisans!

101 Kyoto



Iridescent Ikat pattern in teal blues and puttys woven into a rich raisin ground. This pattern truly moves in the light. Thank you Japan!

102 Milanese



Puffy, raised, luminous chevron pattern in vibrant hues of fuchsia, raspberry, eggplant and bordeaux. Thank you Italy!

104 Sari Red



Raised red florettes outlined in Turkish Blue strategically patterned with raised Bandhani (Hindi word for tying ... an ancient process used in dying) circles. Fun! Thank you India!

105 Quilt Earth



The tiny cross stitches give great detail and interest to the brilliant block patterns. Rusts, taupes, aubergines and sky blue quilt shapes over a deep mocha ground. Thank you Hmong artisans!

106 Bauhaus



Homage to the Square...Symmetry meets nature with various changes in color through hue, saturation and tone. Raised, puffed squares in tones of contemporary oranges and graphic gray's. Thank you Josef Albers, Germany!

All our textiles are designed in-house and all woven in the USA. Our bags are designed from carrying them ourselves and the feedback of our devoted followers. The bags are kindly hand sewn in Boulder, Colorado.

107 Papua



A contemporary translation from the 'Elei' fabrics of Polynesia. Puffy, lustrous mocha stylized blooms nestled amongst black ink illustrated leaves on putty ground. Thank you Polynesian artisans!

108 Blue Boy



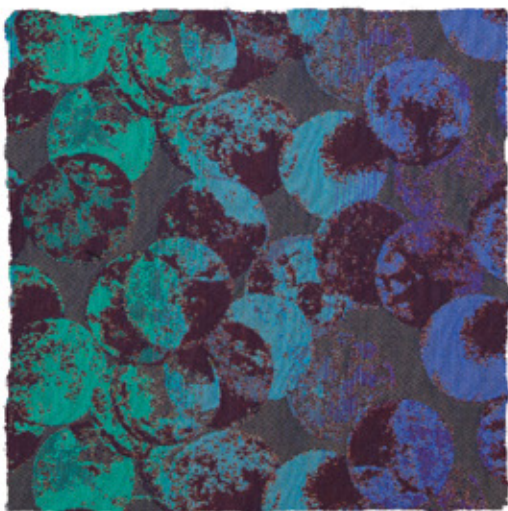
A current version of the Renaissance Velvets! Playful blooms in raised Chenille cobalt blue yarns over a woody tan ground. Luxurious to the touch, hip to the look. Thank you Europe!

109 Chimes



The Bark Cloths from different regions of Africa are graphic wonders! The illustration of the chimes have a hand drawn effect, outlining in deep red with pops of metallic purple over a rich olive canvas. Thank you Africa!

110 Rio



A reflection of the effervescent night life of Rio de Janeiro! Hues of blues and teals embodied in deep aubergine floating bubbles against a subtle slate ground. Rich and mysterious. Thank you Brazil!

111 Sari Black



Raised dark gray slate florettes outlined in light gray strategically patterned with raised Bandhani (Hindi word for tying) circles. A whimsical black fabric! Thank you India!

112 Paris Black



Impressionistic botanicals, black tone on tone in a high sheen. Subtle yet involved. Thank You Paris!

Website



Facebook



YouTube



Scan QR Codes to learn more about Maruca!

Take a virtual tour of the Maruca Design studio!

To request a sample of swatches, please call 1-800-344-2595 orrrrr e-mail us at customerservice@marucadesign.com

**FALL/WINTER 2015
MARUCA SHOW DATES:**
Atlanta Gift - July 9-13
America's Mart
Bldg 3 – 2nd floor – Booth 809

NY NOW - Aug 16-19
Jacob Javitz Center
Booth 8319

Maruca Design
4949 N. Broadway, Ste 150
Boulder, CO
80304
Phone: 303-444-3648
Fax: 303-442-7868
TO ORDER: 1-800-344-2595

MARUCA REPRESENTATIVES 2015 . . . give 'em a call, they're ready to Tango

Deb Atiyeh & Associates.....	800-847-9250	(OR, WA, AK, ID)
Sidney Robbins Company.....	781-595-2023	(ME, RI, VT, NH, MA, CT)
Libby Walter.....	785-766-4572	(IL, IN, KS, MI, MO, OH, WI)
Ronna Berger.....	303-886-0190	(CO, MT, UT, NM, WY)
Lisa Rae Ruud/A'Rae of Goods.....	952-933-2225	(MN, ND, SD, WI, IA)
Rosalind Ruby.....	215-661-1074	(PA, NJ)
Laurie Pearl Friedman.....	301-330-3003	(DC, VA, WV, MD)
Ritch Taranto.....	707-649-1108	(Northern CA)
Joyce Jones.....	800-729-6326	(GA, NC, SC)
Market Expressions.....	800-663-6668	(Canada)
Mary Sellin.....	503-319-3838	(Hawaii)
Maribeth Van Dien.....	312-953-8650	(KY, TN, FL, AL)

HANDMADE
IN
AMERICA

*All our handbags are
kindly made in
Boulder, Colorado.
Our textiles are all
woven in the U.S.
Maruca bags are all
Vegan friendly.*

**TRADE SHOW DATES
FALL/WINTER 2015**

U.S. REP SHOWS:

Denver Apparel & Accessories Show
May 31-June 1, Oct 16-19
Denver Merchandise Mart, Ste 3579
Ronna Berger – 303-886-0190

Minneapolis Gift/Home/Apparel & Accessories
June 7-9, Aug 7-11, Oct 9-12
Mpls Mart – Blue Gallery #108
Lisa Rae Ruud/A'Rae of Goods – 952-933-2225

NW Trend/Apparel Show
June 13-15
Booth TBA
Embassy Suites, Seattle, WA
Deb Atiyeh & Associates – 800-847-9250

NEAC, Marlboro, MA
June 14-17, Aug 23-26, Oct 18-21
Royal Plaza Trade Center, Booth TBA
Sidney Robbins Co – 781-595-2023

Fashion Mart, Northern California
June 20-23, Aug 22-25, Oct 17-20
San Mateo Event Ctr, Booth TBA

Windy City Gift Show
July 25 – 28
Donald E. Stephens Convention Ctr, Rosemont, IL
Booth 417-719
Libby Walter – 785-766-4572

San Francisco Gift
July 25-28
Moscone Center South, Booth TBA
Ritch Taranto – 707-649-1108

Seattle Gift Show
August 15-18
WA Convention Center
Booth 2166, 2168, 2267, 2269
Deb Atiyeh & Associates – 800-847-9250

Denver Gift/Jewelry/Apparel/Accessories
Aug 28-31
Denver Merchandise Mart, Ste 3579
Ronna Berger – 303-886-0190

Denver Western – WESA
Sept 11-13
Denver Merchandise Mart, Ste 3579
Ronna Berger – 303-886-0190

Billings Market – MT
Sept 18-20
Metrapark, Booth G-12
Ronna Berger – 303-886-0190

NW Market Shoe Show – OR
Sept 19-21
Embassy Suites – Washington Sq, Tigard, OR
Room 308
Deb Atiyeh & Associates – 800-847-9250

CANADA REP SHOW:
Toronto Gift Fair
Aug 9-12
Toronto Congress Centre, North Bldg.
Hall 11, Booth 11447

